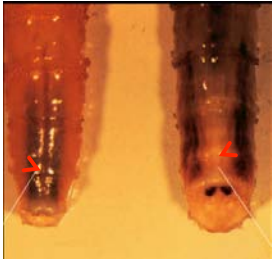


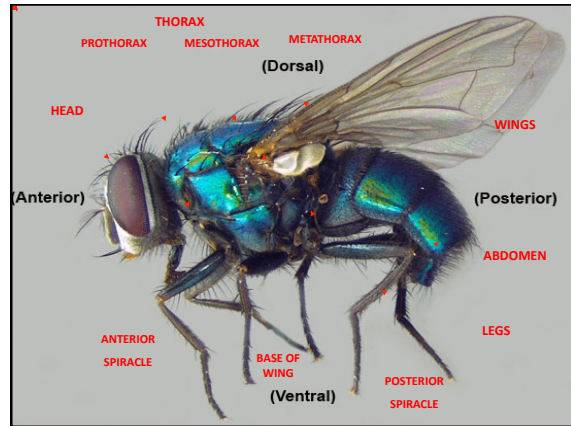
**Can you see the tracheal trunks or not???**

*C. hominivorax*      *C. macellaria*



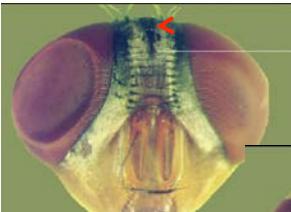
Can easily see tracheal trunks through integument

Tracheal trunks lack definition – cannot see them




**Primary Screwworm**  
*Cochliomyia hominivorax*

Frontal hairs intersecting




**Secondary Screwworm**  
*Cochliomyia macellaria*


Frontal hairs do not cross




**Red Dot**  
Middle stripe shorter than outer stripes



No Red dot  
Middle stripe same length as outer stripes



**Lateral view of thorax**



Dark brown area at base of the leading vein of wing

Base of wing is tan

*Cochliomyia hominivorax*      *Cochliomyia macellaria*

**GENITALIA DEL MACHO**

97 Genitalia del macho Foto: montaje permanente



*C. hominivorax*

98 Genitalia del macho Foto: montaje permanente



*C. macellaria*

Larvae of **C. hominivorax** usually produce a bag-shaped, deep wound, feed gregarious on living tissues, are seen with their head pointed downward and do not move far on the surface.

Myiasis caused by the larva of **C. macellaria** feed on necrotic tissue, migrating considerably around the edges of the wound and in long haired animals, on the hair or wool around it, without producing a bag-shaped wound.

