

Emergency Support Function (ESF) 17 Animal Protection

Primary Agency: Lafayette County Extension Office

Support Agencies: Local Veterinarians
Florida State Agriculture Response Team

I. Purpose

The purpose of Emergency Support Function 17 is to provide for the coordination of local resources in response to small pet, livestock, and exotic animal care needs before, during, and following a significant natural or technological disaster. Animal issues are often overlooked in the planning process for disasters. This lack of planning, caused by the belief that animals can fend for themselves, leads to serious problems when these animals are forced from their habitats due to injury or hunger. By developing operational procedures to care for these animals prior to such an event, this Emergency Support Function will help reduce animal-related problems in emergencies.

Emergency Support Function 17 will provide overall management, coordination and prioritization of county-wide Animal Control services and assets to support pet and livestock animal needs in the event of a major emergency or disaster.

Emergency Support Function 17 readiness planning is guided by the following assumptions:

- Human lives may be lost due to the refusal of owners to evacuate without their pets or livestock. Public education by the County and animal-related organizations is needed to make the people aware of pet sheltering facilities available, and the need to plan in advance.
- The large number of homeless/injured pets, livestock, and exotic animals, would be a health and nuisance/bite threat which would necessitate a response to address the capture and subsequent sheltering of these animals.
- Triage and treatment of sick and injured animals to include euthanasia, if necessary, would have to be accomplished by veterinarians at designated shelters and private offices.
- Commercial pet/livestock food would need to be imported into the county by prior arrangement with vendors. Food drops for wild animals would be organized by various wild-animal-related groups and state agencies.
- The accumulation of shelter animal waste and carcasses must be removed to approve solid waste dumping sites.
- The accumulation of animal carcasses throughout the County must be removed to approve solid waste dumping sites and/or burnt on site.
- Sheltered animals will need to be re-united with their owners after the disaster.

II. Concept of Operations

A. GENERAL

1. Emergency Support Function 17 is organized consistent with State Emergency Operations Center and the requirements of the National Response Plan, the National Incident Management System, and the Incident Command System. This structure and system supports incident assessment, planning, procurement, deployment, and coordination and support operations to Lafayette County through the Lafayette County Emergency Response Team, Area Operations and State Emergency Response Teams to assure a timely and appropriate response to an emergency or situation.
2. Procedures protocols and plans for disaster response activities are developed to govern staff operations at the Lafayette Emergency Operations Center and in the field. These are in the form of Emergency Operations Plan (i.e. Base Plan) and corresponding Appendices, Incident Annexes, Support Annexes and Standard Operating Guidelines, which describe Emergency Support Function 17 capabilities (based on the National Planning Scenarios, the Universal Task List and the Target Capabilities). Periodic training and exercises are also conducted to enhance effectiveness.
3. In a large event requiring local or State mutual aid assistance, Emergency Support Function 17 will work with its support agency counterparts to seek and procure, plan, coordinate and direct the use of any required assets.
4. Throughout the response and recovery periods, Emergency Support Function 17 will evaluate and analyze information regarding the availability of animal protection services.
5. Requests for Animal Control assistance will be channeled through the Extension Office dispatch as much as feasible, with calls taken by the Sheriff's Office dispatcher at other times. At the time of activation of the EOC, Emergency Support Function 17 will be staffed on a 24-hour schedule to interface and communicate with other agencies and prioritize assistance requests.

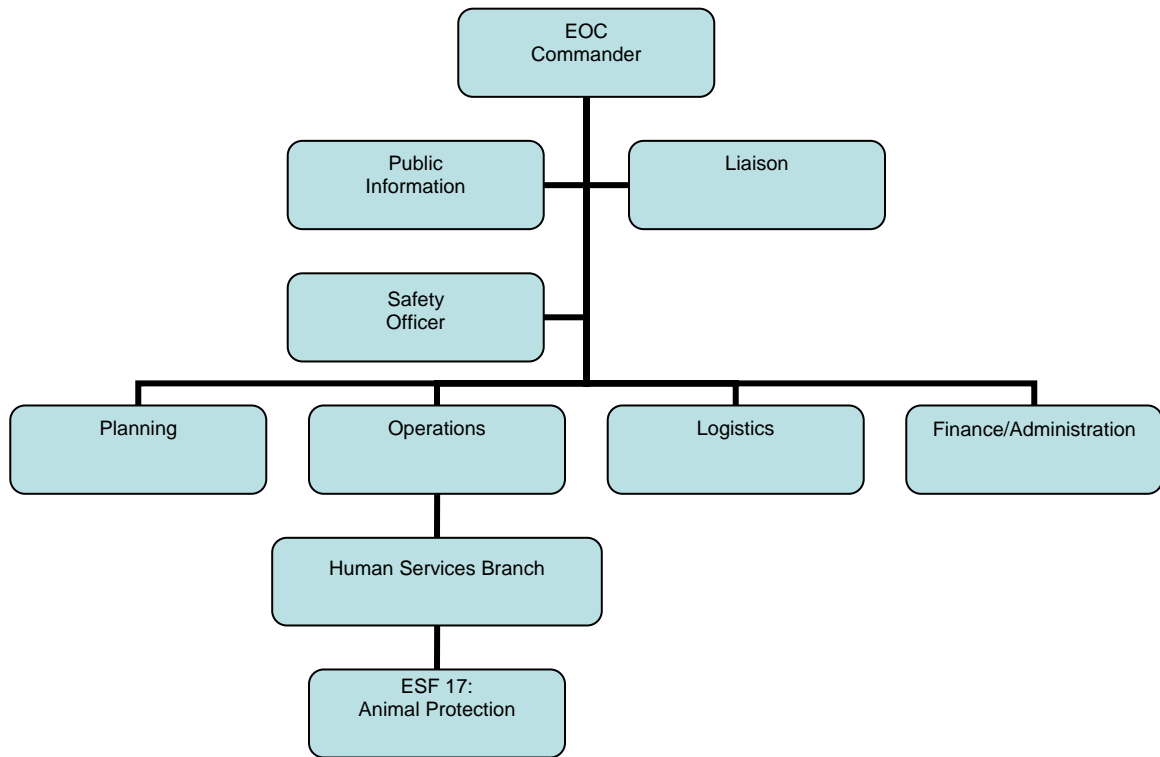


Figure 21 – Incident Command System Structure: ESF 17 – Animal Protection

B. ORGANIZATION

1. COUNTY

- a. The Lafayette County Extension Office, or designee at the Emergency Operations Center, is responsible for all activity of the Emergency Support Function. All volunteer animal-related agencies will coordinate directly with this Emergency Support Function at the EOC. Lafayette County Extension Service will coordinate all large animals Emergency Support Function Activity with this ESF at the EOC.
- b. During an activation of the County Emergency Operations Center, support agency staff is integrated with the Lafayette County Extension Office staff to provide support that will provide for an appropriate, coordinated and timely response.
- c. During an emergency or disaster event, the Emergency Operations Center, Operations Section Chief will coordinate the support resources from the support agencies with the Human Services Branch Chief.
- d. During the response phase, Emergency Support Function 17 will evaluate and analyze information regarding volunteers and donations requests. Also, Emergency Support Function 17 will develop and update assessments of the requirements for resources to provide animal protection services in the impacted area and undertake contingency planning to meet anticipated demands and requirements.
- e. Lafayette County Extension Office develops and maintains the overall Emergency Support Function 17 Emergency Operations Plan and

accompanying Appendices, Annexes and Standard Operating Guidelines that govern response actions related to emergencies. However, support agencies may develop and maintain their own similar documents for internal use, which must be compatible with and in support of the overall Emergency Operations Plan. All such documents will be in compliance with the National Response Plan, the National Incident Management System, the Incident Command System and the County Comprehensive Emergency Management Plan.

- f. Staffing of ESF 17 positions will be accomplished through using resources of the Lafayette County Extension Office along with personnel from ESF 17 support agencies and trained and screened unaffiliated volunteers.

2. AREA

- a. The Human Services Branch Chief, in consultation with the requesting jurisdiction, may obtain additional animal protection services via established mutual aid agreements.
- b. The Florida Department of Agriculture and Consumer Services serve as the lead agency for animal protection services and support and will designate a liaison to the EOC from the Regional Office and/or the Regional Domestic Security Task Force (RDSTF). The liaisons have been trained to carry out Emergency Support Function 17 responsibilities and will function as coordinators, assessors, and operational personnel in support of EOC or field activities.
- c. If more than one County emergency management operation center is activated, State ESF 17 may support the coordination of the response with regional resources or request additional resources from the State Emergency Operations Center. Under such circumstances, the State ESF 17 agencies will participate in a Multi-Agency coordinating entity to coordinate requests for Animal Protection resources among multiple Emergency Operations Centers.

3. STATE

- a. During an activation of the State Emergency Operations Center, the Florida Department of Agriculture and Consumer Services is the designated lead agency for State animal protection services and will provide a liaison to facilitate requests for ESF 17 resources to local Emergency Operations Centers.
- b. During an emergency or disaster event, the primary and support agencies of Emergency Support Function 17 at the State Emergency Operations Center will report to the Human Services Branch Chief who reports to the Operations Section Chief under the overall direction of the State Coordination Officer.
- c. The Florida Department of Agriculture and Consumer Services develops and maintains the overall Emergency Support Function 17 Emergency Operations Plan and accompanying Appendices, Annexes and Standard Operating Guidelines that govern response actions related to emergencies. However, support agencies may develop and maintain their own similar documents for internal use, which must be compatible with and in support of the overall Emergency Operations Plan. All such documents will be in compliance with the National Response Plan, the National Incident Management System, the Incident Command System and the County Comprehensive Emergency Management Plan.

C. ALERTS/NOTIFICATIONS

1. The Lafayette County Extension Office will notify the County Warning Point when information comes to their attention indicating that an emergency or disaster situation is developing. The report will include all relevant information that is known at this time. Additional information should be reported as it becomes available.
2. The County Warning Point, will notify the "on call" Emergency Duty Officer and/or Emergency Coordinating Officer (ECO) for Emergency Support Function 17 when the County or an area of the County has been threatened or impacted by an emergency or disaster event as provided in the County Warning Point procedure.
3. Emergency Support Function 17 will be activated or placed on standby upon notification by the County Emergency Management Office. The primary and support Animal Protection representatives or designees will jointly manage the emergency activities of ESF 17.
4. Initial notification will be sent by the Emergency Operations Center to Lafayette County Extension Office as the primary agency of this ESF. Immediately following notification to activate this ESF, Lafayette County Extension Office will complete the following:
 - Assure necessary emergency operating facilities and reporting systems are established.
 - Establish communications with the EOC, obtain status report, contact Lafayette County Extension Service, and contact Lafayette County Sheriff's Office, contact area veterinarians and kennels. Provide appropriate representation to the EOC.

D. ACTIONS

Actions carried out by Emergency Support Function 17 are grouped into phases of emergency management: prevention, preparedness, protection, response, recovery and mitigation. Each phase requires specific skills and knowledge to accomplish and requires significant cooperation and collaboration between all supporting agencies and the intended recipients of service. Emergency Support Function 17 encompasses a full range of activities from training to the provision of field services. It also functions as a coordinator and, at times, assumes direct operational control of provided services.

1. PREPAREDNESS ACTIONS

- a. Actions and activities that develop Animal Protection response capabilities may include planning, training, orientation sessions, and exercises for Emergency Support Function 17 personnel (i.e., County, State, Regional, and Federal).
- b. Conduct planning with Emergency Support Function 17 support agencies, Regional Domestic Security Task forces, and other emergency support functions to refine Animal Protection operations.
- c. Deliver preparedness programs that address small pet issues. The Lafayette County Extension Service will coordinate preparedness and response measures that address livestock or other large animals.

- d. Promote awareness of animal protection through a public education brochure entitled, "You and Your Pets...Preparing for Hurricanes"

2. RESPONSE ACTIONS

- a. Coordinate with Emergency Support Function 1 (Transportation), and Emergency Support Function 6 (Mass Care), to provide support in sheltering animals whose owners will not evacuate without their pets. Animals will be placed at the animal control shelter (the American Red Cross does not allow pets in public shelters). Animal Control, to the extent possible, will accept pets from the Red Cross shelters.
- b. Identify, mobilize and deploy assessment representatives to the disaster area(s) to determine the specific health and safety needs and priorities. Emergency Support Function 17 will coordinate with other Emergency Support Functions represented at the EOC to provide support to aid in the relief of nuisance and health-related problems involving animals and their impact on human relief efforts.
 - Provide assistance in the following areas: capture of injured and displaced animals, sheltering, medical care, feeding, relocation and reunification with owners, acquisition of additional food and supplies from vendors to support the relief efforts, continued coordination with other ESFs for timely and proper carcass disposal.

3. RECOVERY ACTIONS

Provide continued care of sheltered animals, provide an extended network for the adoption of unclaimed animals, and assist in the relocation of sick and injured animals to permanent facilities until a return to normal operations.

4. MITIGATION ACTIONS

Develop and deliver guidance for farmers and owners of livestock on measures that can be taken to reduce losses from scenario disaster event

E. DIRECTION AND CONTROL

1. Emergency Support Function 17 complies with the National Response Plan, and the National Incident Management System (NIMS). The NIMS guides the direction and control system adopted by the Department of Emergency Management, which functions as the official disaster prevention, protection, response, preparedness, recovery, and mitigation organization within Lafayette County.
2. The Emergency Support Function 17 system operates at two levels: 1) County Emergency Operations Center; and 2) Field operations.
3. During emergency activations, all management decisions regarding County or regional response are made at the County Emergency Operations Center by the Emergency Support Function 17 coordinator. Under the Incident Command System structure, the Planning, Logistics, Finance/Administration, and Operations Section Coordinators and staff at the County Emergency Operations Center assist the commander in carrying out the overall mission. Sections, Units, Teams, staffing levels, etc. are modular and scalable, depending on the type, size, scope and complexity of the emergency or disaster event.

4. A staffing directory and the Emergency Support Function 17 Emergency Operations Plan, its accompanying Appendices, Annexes and Standard Operating guidelines are maintained by the Lafayette County Extension Office with status of the call lists updated at least monthly and all other documents at least annually.

F. RESPONSIBILITIES

1. PRIMARY AGENCY – LAFAYETTE COUNTY EXTENSION OFFICE

- a. Notify, activate, and mobilize all agencies assigned to the ESF.
- b. Coordinate all support agency actions in performance of missions assigned to this ESF.
- c. Coordinate requests for assistance and additional resources necessary during performance of the mission with the appropriate agencies.
- d. Function as the County's representative/liaison to the Emergency Operations Center (EOC) Team for the activities and responsibilities carried out by the primary and support agencies of this ESF.
- e. Investigate all animal bites.
- f. Facilitate the transportation of injured, stray, or nuisance animals to animal care facilities.
- g. Assist emergency response teams with animal-related problems.
- h. Make the arrangements for the removal and disposal of dead animals.
- i. Coordinate with the Lafayette County Public Health Unit for the release of public information regarding animals and related health issues.
- j. Enforce the Lafayette County Animal Control Ordinance.
- k. Provide for quarantine of bite animals for observation. Impounding animals roaming at large.
- l. Euthanize sick and/or injured animals through assigned and authorized persons.
- m. Return wild animals to their natural environment.
- n. Respond to animal-related inquiries.
- o. Investigate animal cruelty and neglect complaints.
- p. Maintain equipment and resources necessary to manage livestock in a disaster situation.
- q. Provide or arrange the transportation of livestock in the aftermath of a disaster.
- r. Assist in the establishment of housing for livestock and displaced animals.

2. SUPPORT AGENCIES:

(NOTE: Each Support Agency should review its own roles and responsibilities and revise in conjunction with the Lafayette County Extension Office).

- a. Notify, activate, and mobilize all personnel and equipment to perform or support assigned functions.
- b. Designate and assign personnel for staffing of all facilities at which this Emergency Support Function is required, and providing representation when it is determined by the primary agency of this Emergency Support Function to be necessary.
- c. Coordinate all actions of the support agency with the primary agency when performing the assigned missions of this Emergency Support Function.
- d. Identify all personnel and resource requirements to perform assigned missions which are in excess of the support agencies' capabilities.

G. FINANCIAL MANAGEMENT

1. Emergency Support Function 17 is responsible for managing financial matters related to resources that are procured and used during an event. During a response, each agency/department is responsible for recording and tracking its own expenditures and seeking reimbursement from the appropriate resource after the event. If a federally declared disaster exists, then a reimbursement formula is established by the Federal Emergency Management Agency that may be as much as 100 percent, but usually does not exceed 75 percent.
2. Expenditures by support entities will be documented by those entities and submitted directly to the Finance/Administration Section or a designated Finance Service officer as soon as possible.

H. REFERENCES AND AUTHORITIES

- State Emergency Support Function 17 Annex
- Florida Statutes 1993, Emergency Management, chap. 252 (252.31- 52.61)
- Florida SS 911 (1993)
- The Federal Response Plan for P.L. 93-288 (1992)
- Regional Domestic Security Task Forces, Section 943.0312, F.S.
- Florida Field operations Guide (FFOG)
- DHS Homeland Security Act (2002)
- HSPD-5, Management of Domestic Incidents
- HSPD-8, National Preparedness Goal
- DHS National Incident Management System (2004)
- DHS National Response Plan (2004)

Contact information:
Current as of Friday, April 25, 2008

Lafayette County Extension Office
Jana Hart, Manager
Office: (386) 294-1279

W. C. Hart, ESF-17 Coordinator
(386) 208-5091

(SART)

Joe Kight, Senior Management Analyst II
ESF-17 Emergency Coordinating Officer
Division of Animal Industry Phone: (850) 410-0900
Fax: (850) 410-0957
kightj@doacs.state.fl.us

Dana DeJarnatt
Division of Animal Industry
Florida Department of Agriculture & Consumer Services
Keystone Heights, FL
(904) 868-5806
dejarnd@doacs.state.fl.us

(DART)

Suwannee Animal Volunteer Endeavor
(Disaster Animal Response Team)
(386) 362-1358
(386) 208-0072
bigjum1116@windstream.net