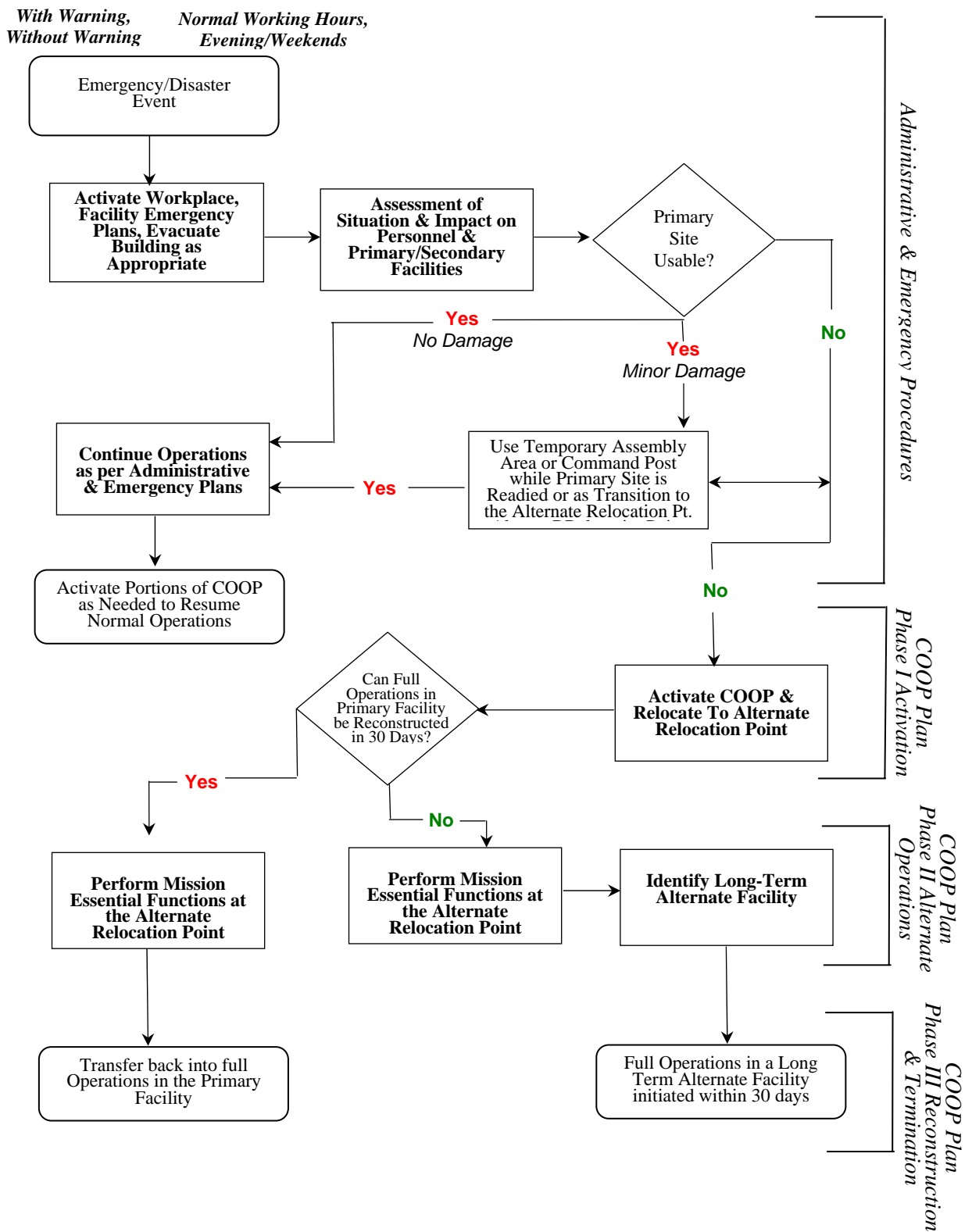


ANNEX B: COOP DECISION FLOW CHART and OPERATIONAL CHECKLISTS

COOP Process Flow Chart



### **COOP Re-Location Checklist**

- Notify ECC at the PSC of pending move of Admin, with approximate time of arrival.
- Notify Parks and Rec of pending use of office areas at G.T. Bray Park.
- Move equipment according to re-location guidelines.
- If the need to evacuate animals arises, all would be moved to the Palmetto Fairgrounds with use of the auditorium and arena areas.
- Use of Happy Tails Dog Park at G.T. Bray as a staging area post event.
- Use of Dog Leg Dog Park at Buffalo Creek as a staging area post event.
- Selection would be made for relocation of animals pending existing circumstances.
- Advise SWP of pending move and geographical coordinates of new location.
- Notify all agencies and departments of move.
- Notify all State, Area, and local agencies of new contact numbers (voice, fax, cell)
- Activate emergency communications systems.
- Assure staffing levels.
- Press release of land-line numbers for CIC, Switchboard, Special Needs, etc.